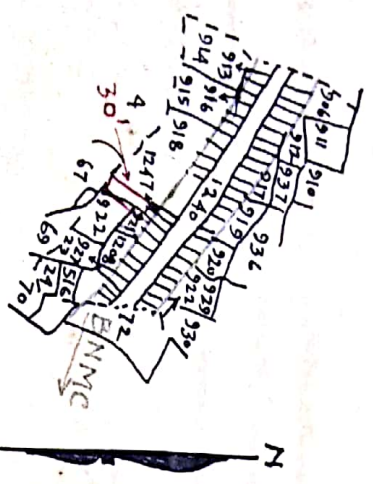


Plan of Addl. Land to be Acqd. Permanently for B.N.M.C. Near Ch. "72.00.

In Mouza:- Fulsahari-No-9. P.S.-Sagaridighi-Dt. Murshidabad.

Scale:- 330'0"=1"

Mouza:- FULSAHARI. J.L.No-9



Schedule of Land.

Dist.	P. S.	Mouza & J.L. No.	C.S. Plots	Area
Murshidabad	Sagaridighi	Fulsahari-9.	918, 921 and 922	0.07 acre
"	"	"	in part 920/1247 in full.	

Land to be acquired shown thus:-

Land already " " " :-

Traced by:-

Os Majumdar

CKD by:- 22-6-68

190.

Spl. L.A. Collector

Birbhum

Number 25/10/68