

**PLAN OF LAND TO BE ACQUIRED FOR CONST. OF RETD. EMBANKMENT FOR DAMAGED AJOY LEFT EMBANKMENT FROM 11.73 K.M TO 12.50 K.M. IN MOUZA JASHRA. J.L. NO. 164**  
**P.S. - BOLPUR & DT. BIRBHUM**  
**MOUZA: JASHRA J.L. NO. 164 (SHEET NO. 1)**  
**P.S. - BOLPUR, DIST. - BIRBHUM.**

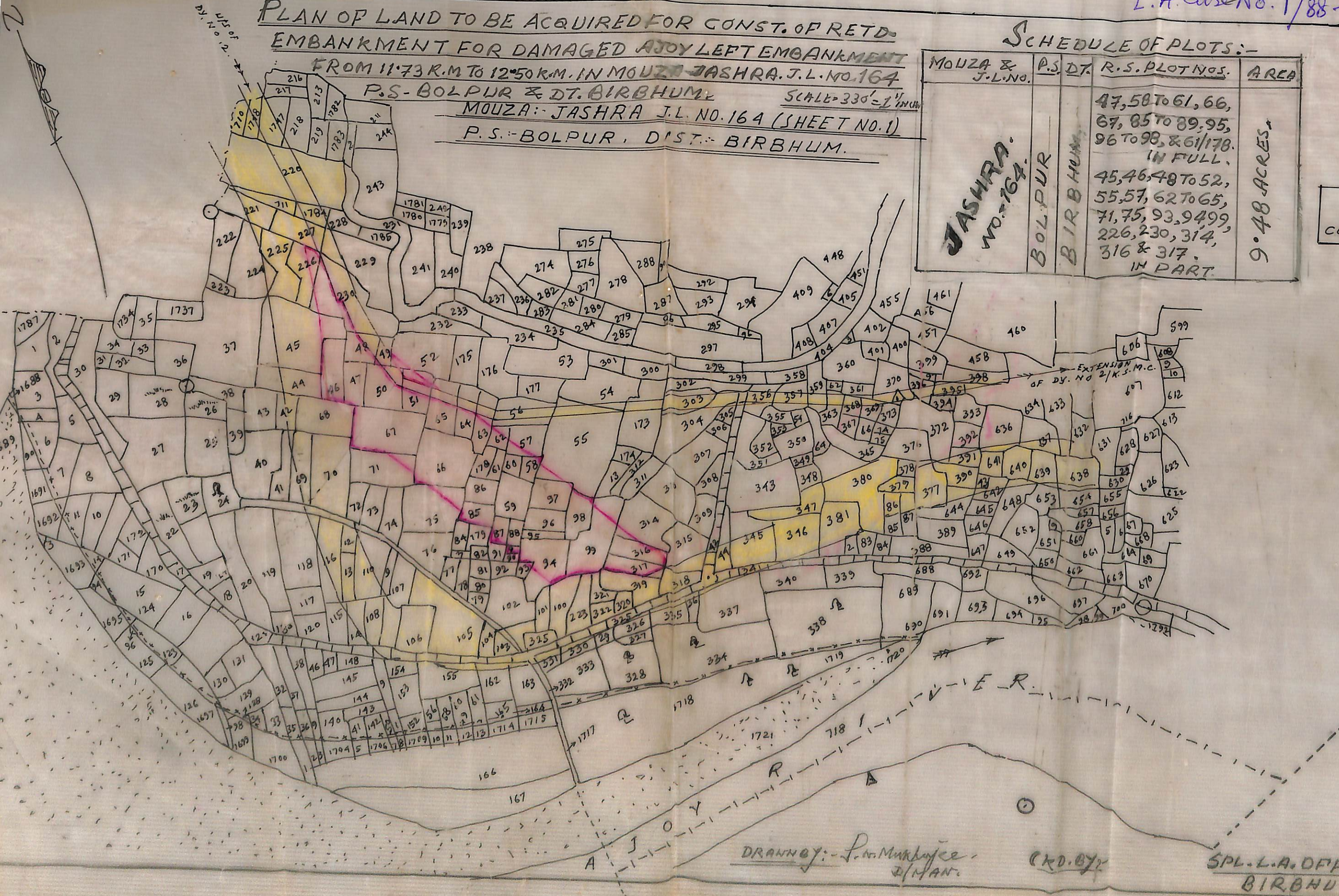
SCALE = 330' = 1" IN CH.

**SCHEDULE OF PLOTS:-**

MOUZA & J.L. NO.	P.S. DT.	R.S. PLOT NOS.	AREA
JASHRA. NO. 164.	BOLPUR BIRBHUM.	47, 50 TO 61, 66, 67, 85 TO 89, 95, 96 TO 98, & 61/178. IN FULL.	9.48 ACRES.
		45, 46, 48 TO 52, 55, 57, 62 TO 65, 71, 75, 93, 94, 99, 226, 230, 314, 316 & 317. IN PART.	

28/3/88  
 COMP. BY.

GOVT. MAYU  
 LAND PLAN SHOWING TLY. FOR CONSTR. AJOY LEFT EMBK. CH. 410.00) CAUSE IN MOUZA: JAS. DRG. NO. 856/88.  
 Remains 28-3-88.  
 TRACED BY.  
 SDI - M. KOLE.  
 S.O. / AJOY.



- REF:-
1. LAND ALREADY
  2. LAND TO BE ACQ

N.B.  
 THIS DRAWING

DRANNOY: - P. M. Mukherjee  
 D/MAN.

(K.D.B.)

SPL. L.A. OFFICER,  
 BIRBHUM.

ADDL. DIST. M.  
 BIRBHUM.



FOR CONST. OF RETD.  
 AJOY LEFT EMBANKMENT  
 MOUZA JASHRA. J.L. NO. 164  
 BIRBHUM. SCALE = 330' = 1" INCH  
 J.L. NO. 164 (SHEET NO. 1)  
 DIST. - BIRBHUM.

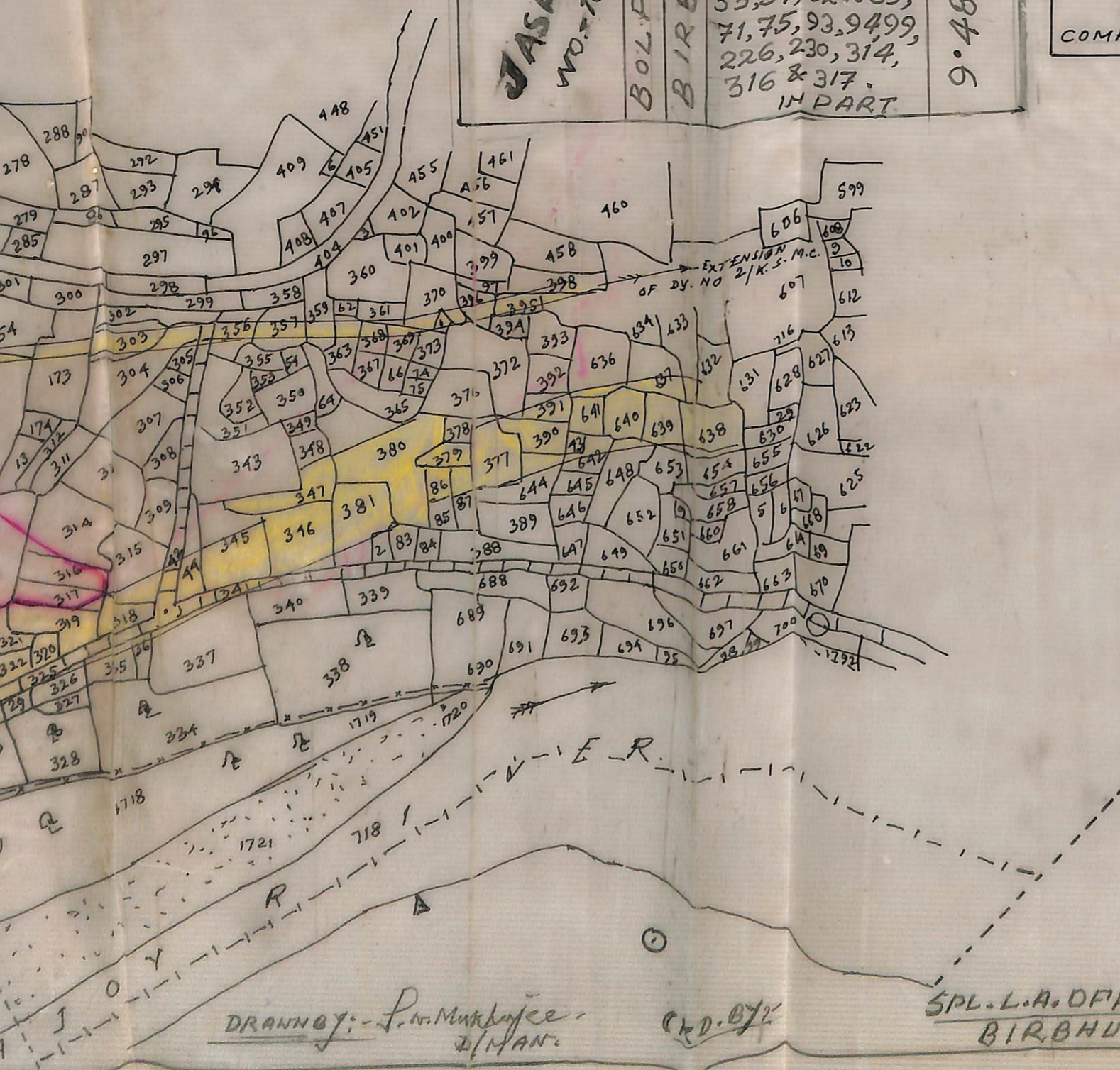
SCHEDULE OF PLOTS:-

MOUZA & J.L. NO.	P.S.	DT.	R.S. PLOT NOS.	AREA
JASHRA. NO. 164.	BOLPUR	BIRBHUM.	47, 58 TO 61, 66, 67, 85 TO 89, 95, 96 TO 98, & 61/178. IN FULL.	9.48 ACRES.
			45, 46, 48 TO 52, 55, 57, 62 TO 65, 71, 75, 93, 94, 99, 226, 230, 314, 316 & 317. IN PART.	

GOVT. OF WEST BENGAL.  
 MAYURAKSHI PROJECT.  
 LAND PLAN SHOWING THE LAND TO BE ACQUIRED PERMANENTLY FOR CONSTRUCTION OF RETIRED EMBKT. FOR DAMAGED AJOY LEFT EMBKM. FROM KM 11.73 TO KM 12.50 (CH. 385.00 TO CH. 410.00) CAUSED DUE TO FLOOD IN AUGUST & SEPTEMBER '87 IN MOUZA - JASHRA, P.S. - BOLPUR, DIST. - BIRBHUM.

DRG. NO. 856/88. SCALE: - 330' = 1".  
 Dated: 28.3.88.  
 TRACED BY: SDI - M. KOLE. S.O. / AJOY.  
 SDI - K. MISRA S.D.O. / KIRNAHAR IRRGN. SUB-DIVISION.  
 (B. DAS GUPTA) EXECUTIVE ENGINEER M.S.C. DIVISION.

28/3/88  
 COMP. BY.



REF:-

1. LAND ALREADY ACQUIRED SHOWN THUS... (yellow highlight)
2. LAND TO BE ACQUIRED PERMANENTLY SHOWN THUS... (pink highlight)

N.B.  
 THIS DRAWING SUPERSEDES DRG. NO. 3072 & 3082/88.

SPL. L.A. OFFICER,  
 BIRBHUM.

ADDL. DIST. MAGISTRATE,  
 BIRBHUM.