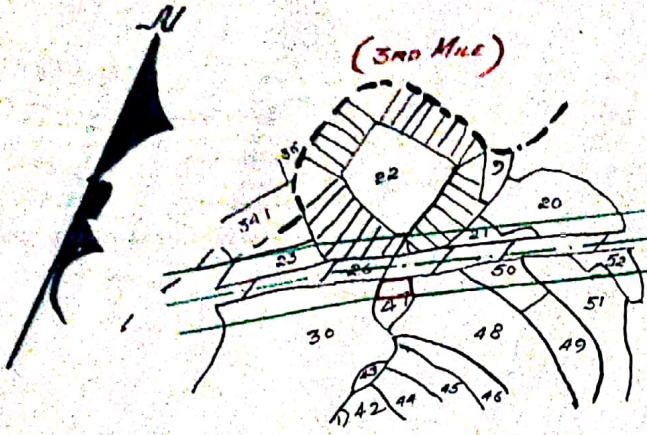


PLAN OF LAND FOR CONSTRUCTION OF RAMPURHAT
DUNIGRAM V.R. IN MOUZA KURULA. No. 154
UNDER P.S. RAMPURHAT, DT. BIRBHUM
SCALE: 16" = 1 MILE.



Reference:—

1. Land already acquired Permanently
 Shown thus...
2. Land to be acquired
 Shown thus...

MOUZA:— KURULA J.L. No. 154

SCHEDULE OF LANDS:—

Mouza.	No.	Thana	District	E. S. PLOTS IN PART.	AREA.
Kurula	154.	Rampurhat	Birbhum.	47.	0.04 of an acre.

Swamp
18/9/70

Edwin
30.10.70

PREPARED BY. **LKD. BY.** **ADDE. L.A. COLLECTOR.**
18/10/70 *19.10.70*
190. **BIRBHUM.**