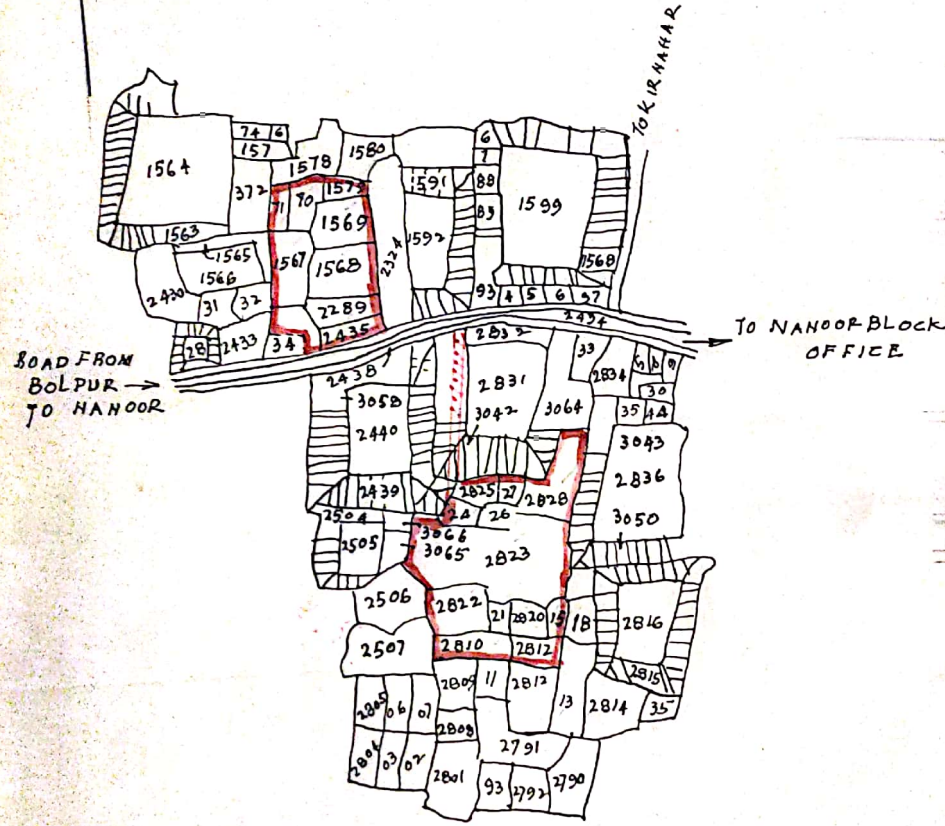


LAND PLAN FOR THE PROPOSED HEALTH CENTRE AT NANOOR
 MOUZA - CHANDIDAS - NANOOR J.L. No 65 P.S. - NANOOR DI - BIRBHUM
 SCALE :- 330'-0" = 1"

LAND PROPOSED FOR ACQUISITION SHOWN THUS



SCHEDULE OF LAND

Mouza & J.L. No.	P.S.	Dist.	C. & P. Ploys.	AREA
CHANDIDAS			1567, 1568, 1569	
NANOOR-65	NANOOR	BIRBHUM.	1570, 1571, 1579, 2209 2435, 2810, 2819, 2820 2821, 2822, 2823, 2824 2825, 2826, 2827, 2828 in full 2434, 2439, 2812, 2832 & 3042 in part.	5.27 5.15

vide collection order of 23-5-72

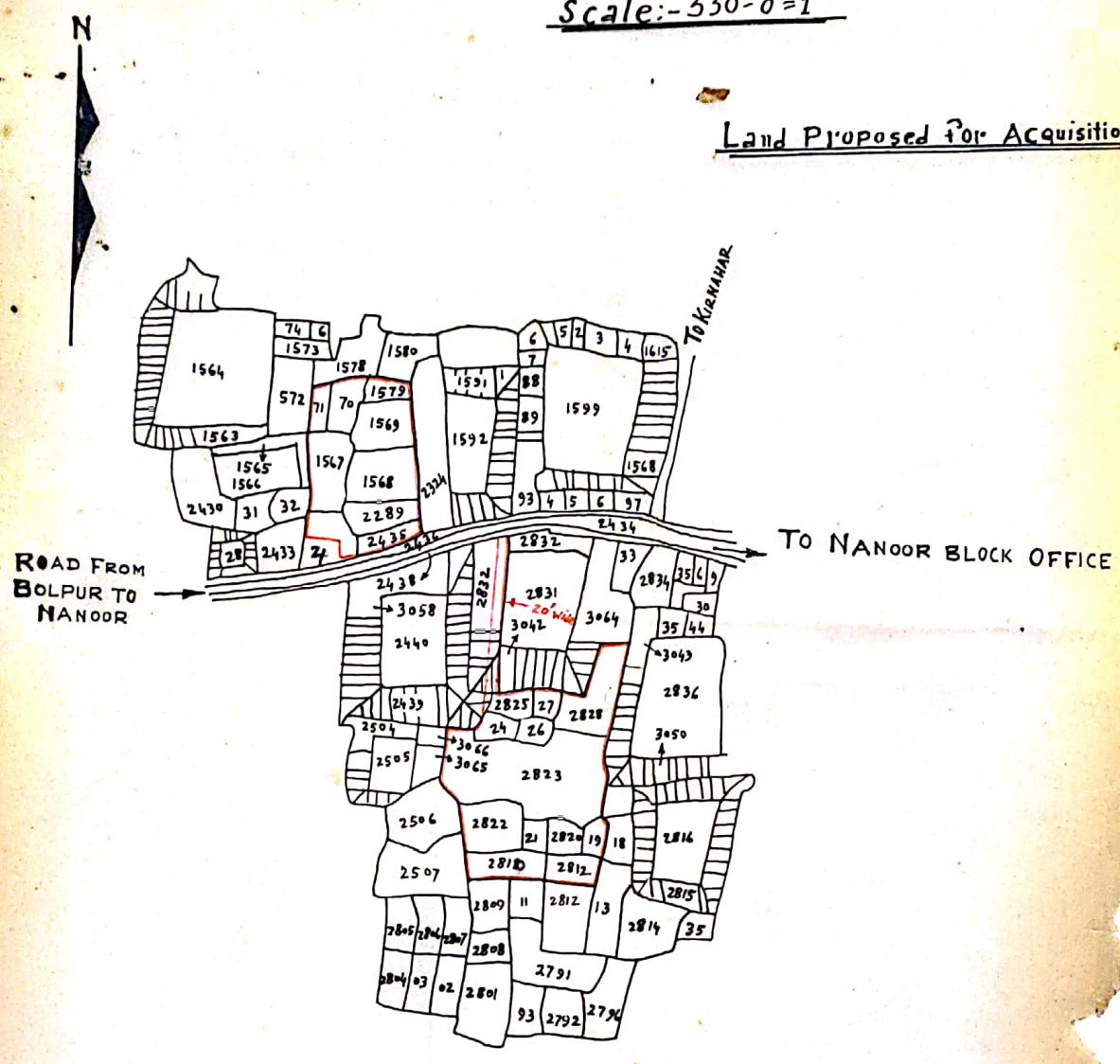
[Signature]
 17.12.71
 Dy. DIRECTOR OF HEALTH SERVICES (P.E.D)
 Govt. OF W. BENGAL

Land Plan For The Proposed Health Centre at Nanoor

Mouza:-Chandidas Nanoor - J.L. NO:-65 P.S:-Nanoor. Dt:-Birbhum

Scale:- 330'-0"=1"

Land Proposed For Acquisition Shown Thus:-



Schedule Of Lands

Mouza & J.L. No.	P. S.	Dist	C. S. Plots
<u>Chandidas Nanoor - 65</u>	<u>Nanoor</u>	<u>Birbhum</u>	1567. 1568. 1569. 1570-1571. 1579. 2289 2435 2810. 2819. 2820. 2821. 2822. 2823. 2824. 2825. 2826. 2827. & 2828 in full. 2434. 2439. 2812 <u>2832</u> & 3042 in part

Traced by:- sd/ D. Chatterjee
D/Man. 27.4.68.
Re-traced by:- Dhe... D/Man. 26.11.71.

Engineer
D.H.S.

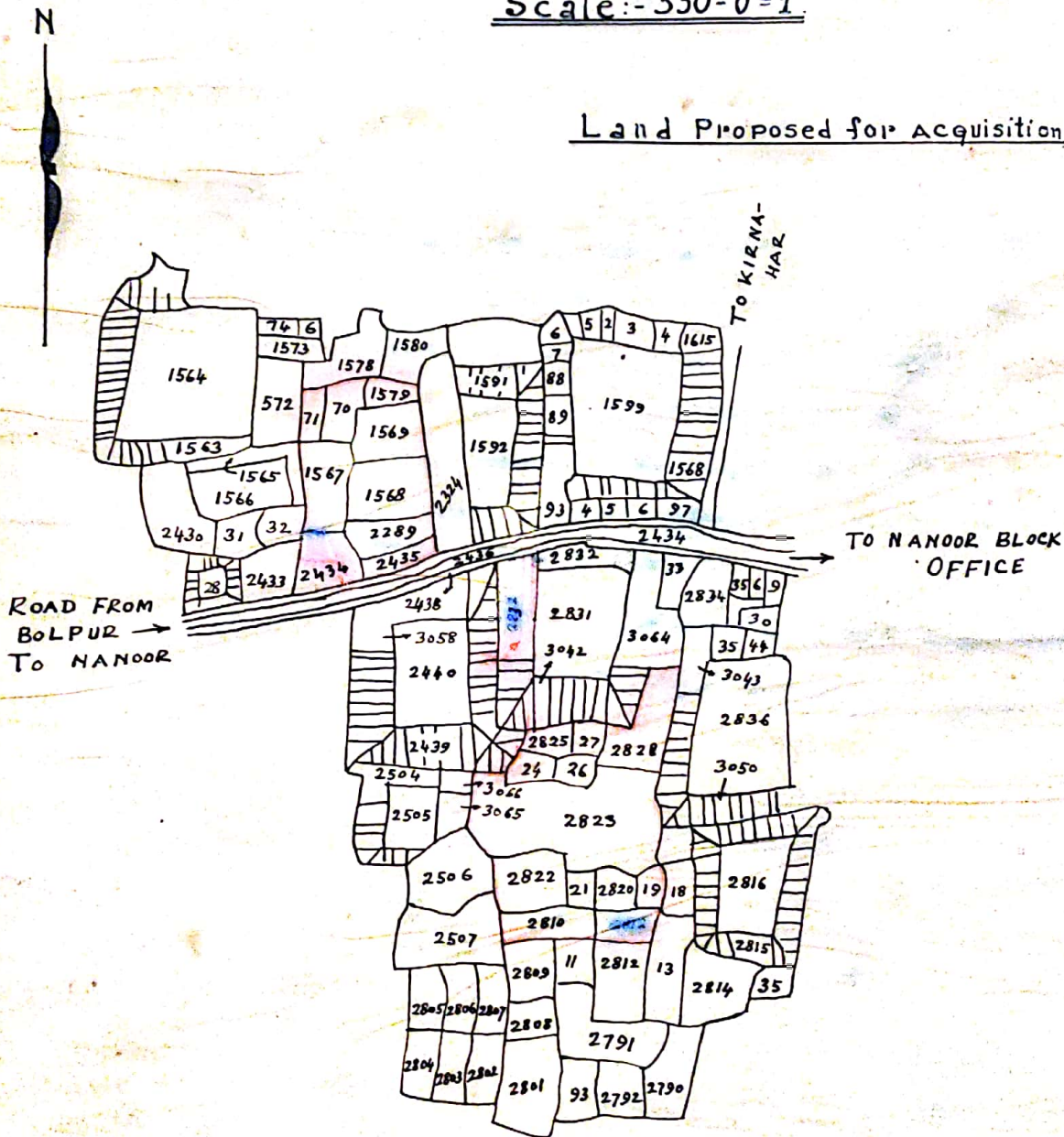
Sd/- JHe
Dy. Direct
Govt. of

For The Proposed Health Centre At Nanoor

Mouza:-Chandidas Nanoor- J.L.No:-65. P.S.-Nanoor. Dt.-Birbhum.

Scale:- 330'-0"=1"

Land Proposed for Acquisition :-



Schedule Of lands.

Mouza & J.L.No.	P. S.	Dist.	C. S. Plots	Area
<u>Chandidas - Nanoor - 65.</u>	<u>Nanoor</u>	<u>Birbhum.</u>	1567, 1568, 1569, 1570, 1571, 1579, 2289, 2435, 2810, 2819, 2820, 2821, 2822, 2823, 2824, 2825, 2826, 2827, & 2828 in full 2434, 2439, 2812, & 3042 in part	5.27

Traced by: - *Chandra*
22.4.68

spl. Engineer
D. H. S.

Dy. Director of Health
Govt. of W. Bengal.